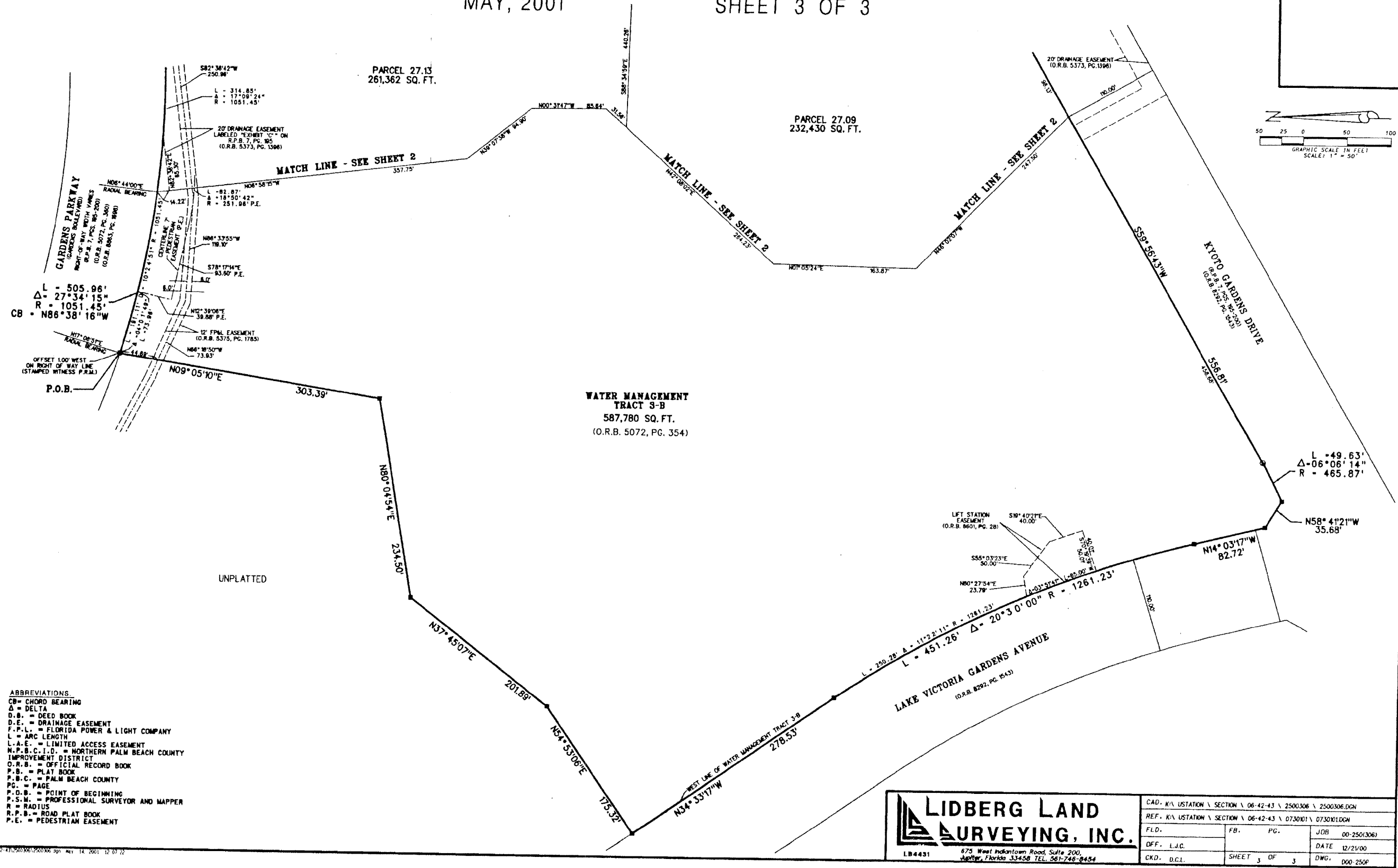


REGIONAL CENTER PARCELS 27.09, 27.13 AND WATER MANAGEMENT TRACT 3-B

SITUATE IN SECTION 6, TOWNSHIP 42 SOUTH, RANGE 43 EAST,
CITY OF PALM BEACH GARDENS, PALM BEACH COUNTY, FLORIDA
MAY, 2001
SHEET 3 OF 3

201



LIDBERG LAND SURVEYING, INC.
 675 West Indiantown Road, Suite 200,
 Jupiter, Florida 33458 TEL. 561-746-8454

CAD: K:\USTATION\SECTION\06-42-43\2500306\2500306.DGN		
REF: K:\USTATION\SECTION\06-42-43\073001\073001.DGN		
FLD.	FB.	PG.
OFF. L.J.C.		JOB 00-250(306)
CKD. D.C.L.	SHEET 3 OF 3	DATE 12/21/00
		DWG. 000 250P